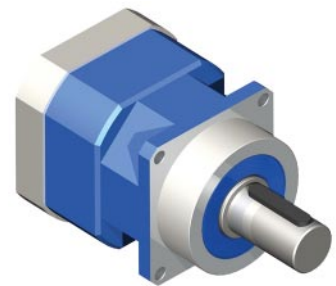


GBPC-075x-NP Series

FEATURES

- Backlash as low as 5 arc-min
- Gear ratios from 3 to 100
- Available in 1 and 2 stage models
- Long wear life, over 20,000
- Lifetime lubrication
- High durability



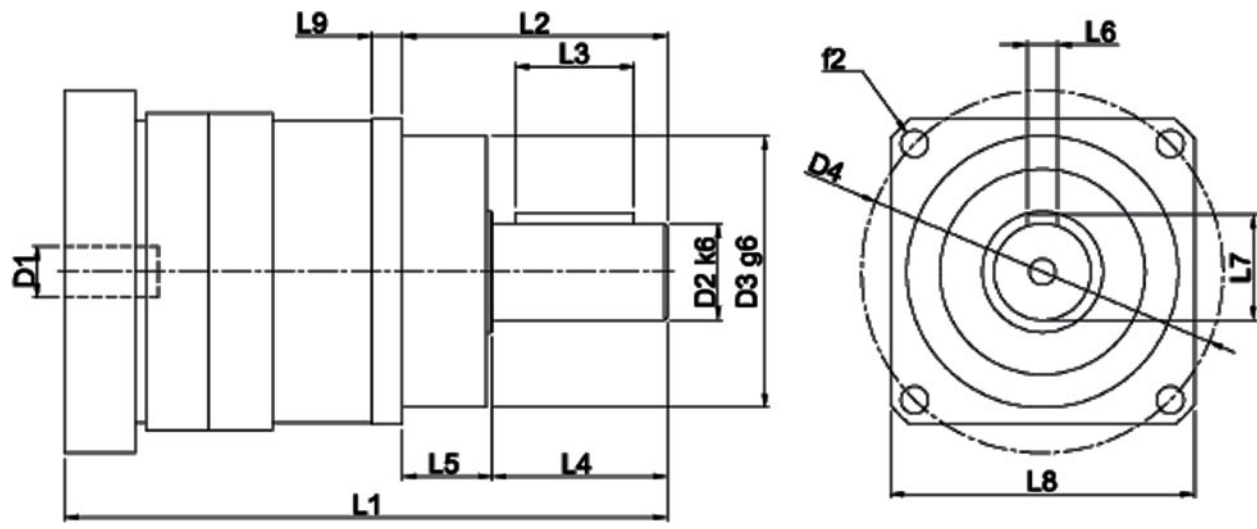
DESCRIPTION

The GBPC-075-NP Series Planetary Gearbox offers you the precision you need at the prices you want! This Planetary Gearbox is designed with very low backlash for motion control, automation, and robotic applications requiring precise position requirements. This Planetary Gearbox will match your servo or stepping motor. Built with the design goal of offering a cost effective product without sacrificing quality, you will find that this Planetary Gearbox offers you an extraordinary value. You will find online prices on this website along with all the information you need to know to select the perfect Planetary Gearbox for your applications.

SPECIFICATIONS

Model #	Gear Ratio (X:1)	Rated Output Torque (oz-in)	Max Output Torque (oz-in)	Rated Input Speed (RPM)	Maximum Input Speed (RPM)	Stages	Backlash Maximum (arcmin)	L1 Length (mm)	L2 Length (mm)	Weight (lbs)
GBPC-0751-NP-003-yyyyy-zzz	3	5520	28320	4500	6000	1	5	174.5	56	8.2
GBPC-0751-NP-004-yyyyy-zzz	4	9200	33984	4500	6000	1	5	174.5	56	8.2
GBPC-0751-NP-005-yyyyy-zzz	5	9200	33984	4500	6000	1	5	174.5	56	8.2
GBPC-0751-NP-007-yyyyy-zzz	7	9200	33984	4500	6000	1	5	174.5	56	8.2
GBPC-0751-NP-010-yyyyy-zzz	10	5664	28320	4500	6000	1	5	174.5	56	8.2
GBPC-0752-NP-012-yyyyy-zzz	12	12032	33984	4500	6000	2	5	201	56	9.3
GBPC-0752-NP-016-yyyyy-zzz	16	12032	33984	4500	6000	2	5	201	56	9.3
GBPC-0752-NP-020-yyyyy-zzz	20	12032	33984	4500	6000	2	5	201	56	9.3
GBPC-0752-NP-025-yyyyy-zzz	25	12032	33984	4500	6000	2	5	201	56	9.3
GBPC-0752-NP-035-yyyyy-zzz	35	12032	33984	4500	6000	2	5	201	56	9.3
GBPC-0752-NP-040-yyyyy-zzz	40	12032	33984	4500	6000	2	5	201	56	9.3
GBPC-0752-NP-050-yyyyy-zzz	50	12032	33984	4500	6000	2	5	201	56	9.3
GBPC-0752-NP-070-yyyyy-zzz	70	12032	33984	4500	6000	2	5	201	56	9.3
GBPC-0752-NP-100-yyyyy-zzz	100	6800	28320	4500	6000	2	5	201	56	9.3

* yyyyy denotes motor pilot, zzz denotes input shaft diameter, see "Matching the Gearbox to Your Motor" on the next page. L010567



L3	32mm	L4	36mm	L5	20mm
L6	6mm	L7	24.5mm	L8**	76mm
L9	7mm	D1	19 - 24mm	D2 k6	22mm
D3 g6	70mm	D4	85mm	f2	6.6mm

** depending on motor, value may vary.

Radial Load:	945 lbs - Force	Axial Load:	855 lbs - Force
Operating Temperature:	-4° - 194° F	Noise Level:	under 65 dB
Efficiency:	96%	IP Rating:	IP65

Matching the Gearbox to Your Motor

There are a few details that you need to consider before purchasing a gearbox. The gearbox must be manufactured to match the motor's bolt hole circle, pilot diameter, shaft diameter, and shaft length. This is handled by a code in the last two sections of the part number. For instance, in the part number GBPC-0751-NP-003-AAyy1-zzz, the "AAyy1" is for an Anaheim Automation NEMA yy Motor pilot and the shaft length. The "zzz" is for the shaft diameter of 0.zzz". For non standard Anaheim Automation or custom motors contact factory for complete part number.

Parameter	Range	Typical
Input Shaft Diameter	Stage 1: 1 mm to 24 mm Stage 2: 11 mm to 19 mm	19 mm shaft diameter
Input Shaft Length	8 mm to 56 mm	"AAyy1" - zzz"
Pilot	Stage 1: 24 mm to 300 mm Stage 2: 19 mm to 300 mm	"AAyy1" - zzz"
Bolt Hole Circle	1 mm to 350 mm	"AAyy1" - zzz"